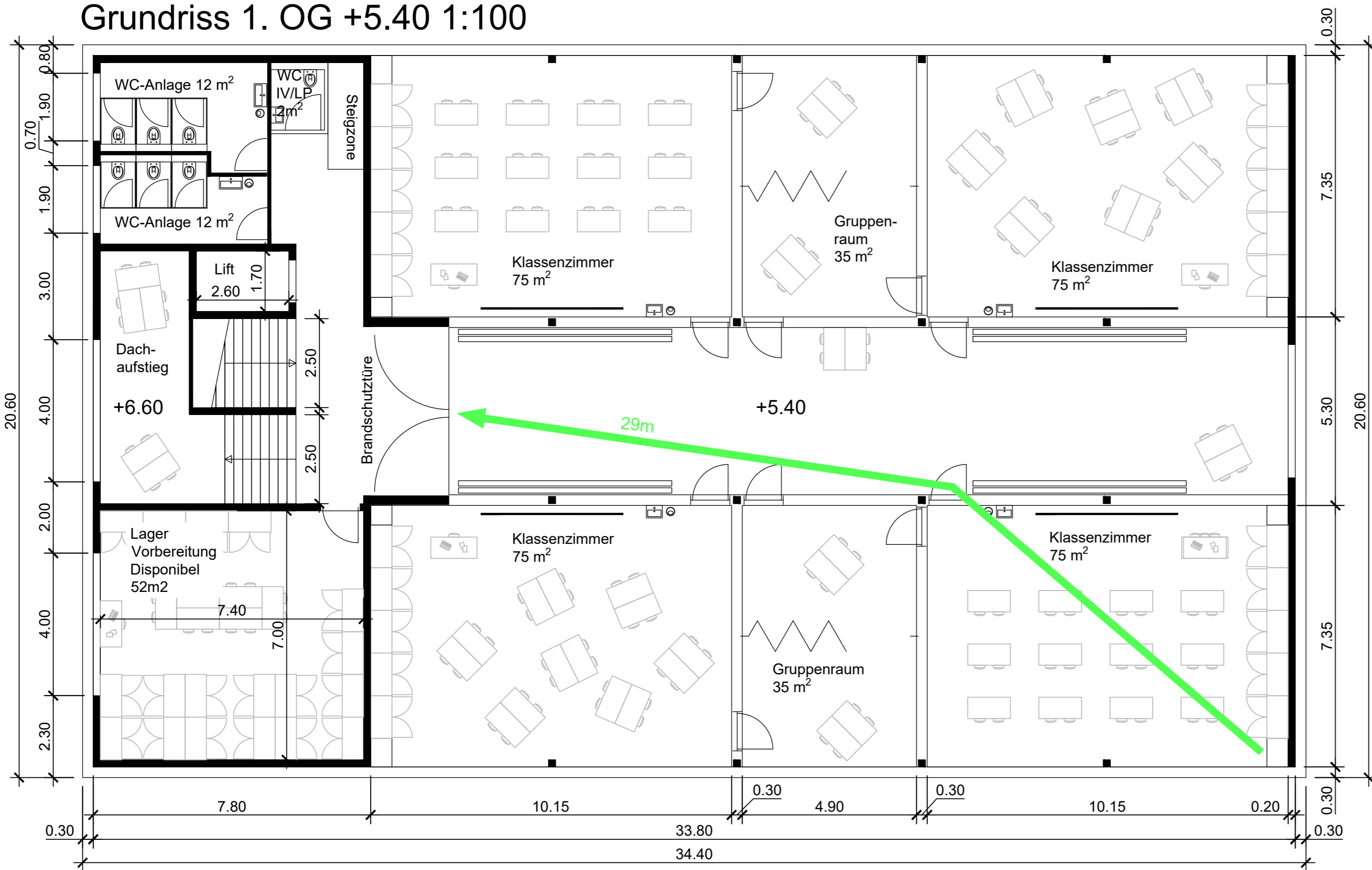
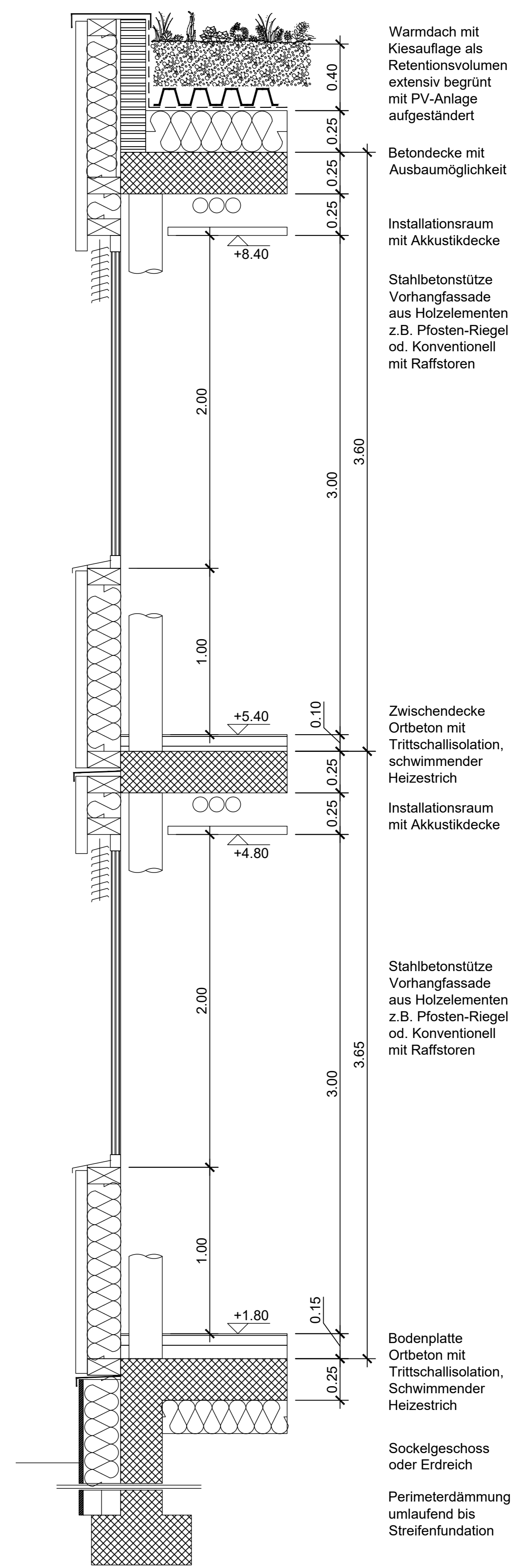


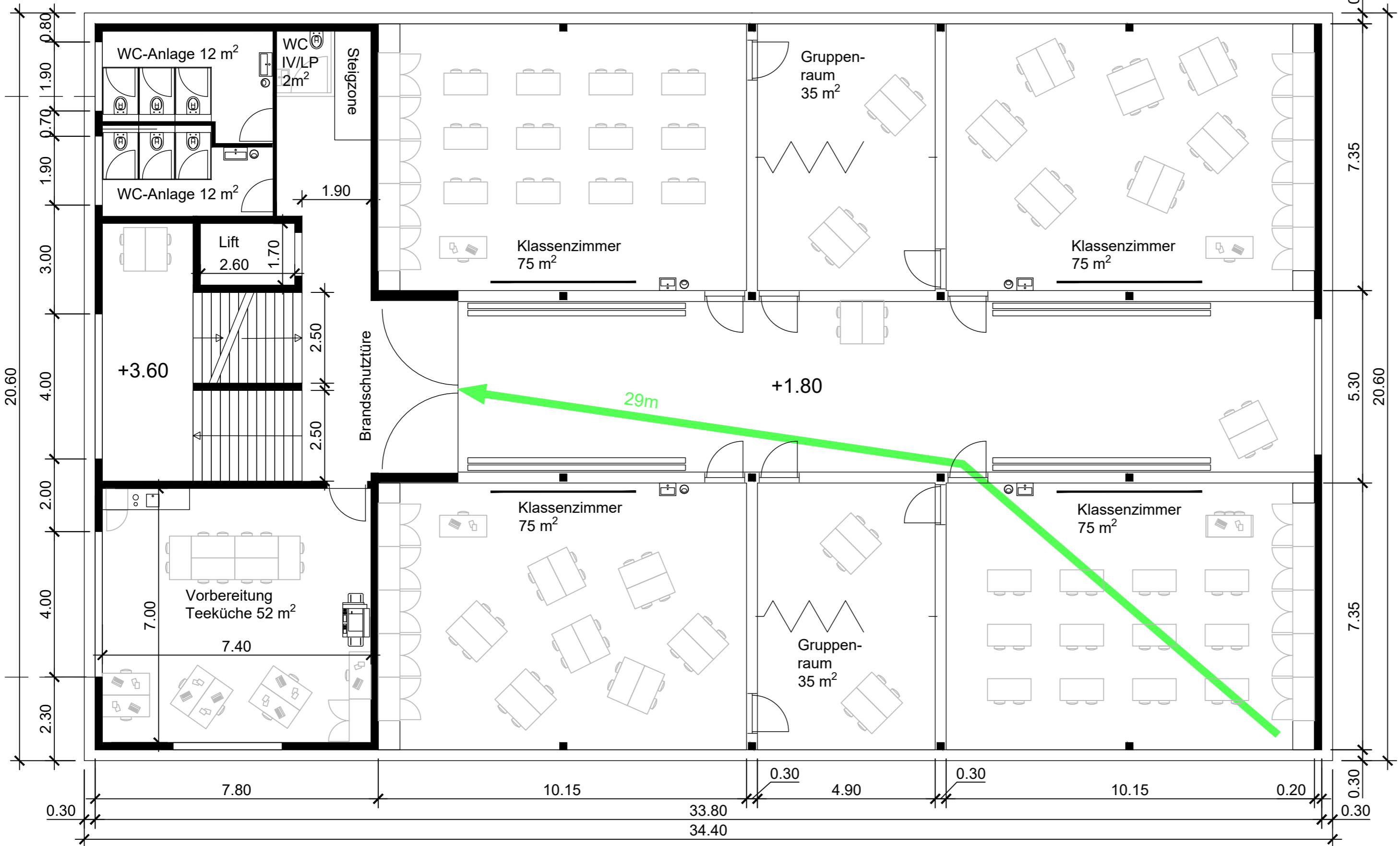
Grundriss 1. OG +5.40 1:100



Fassadenschnitt 1:20

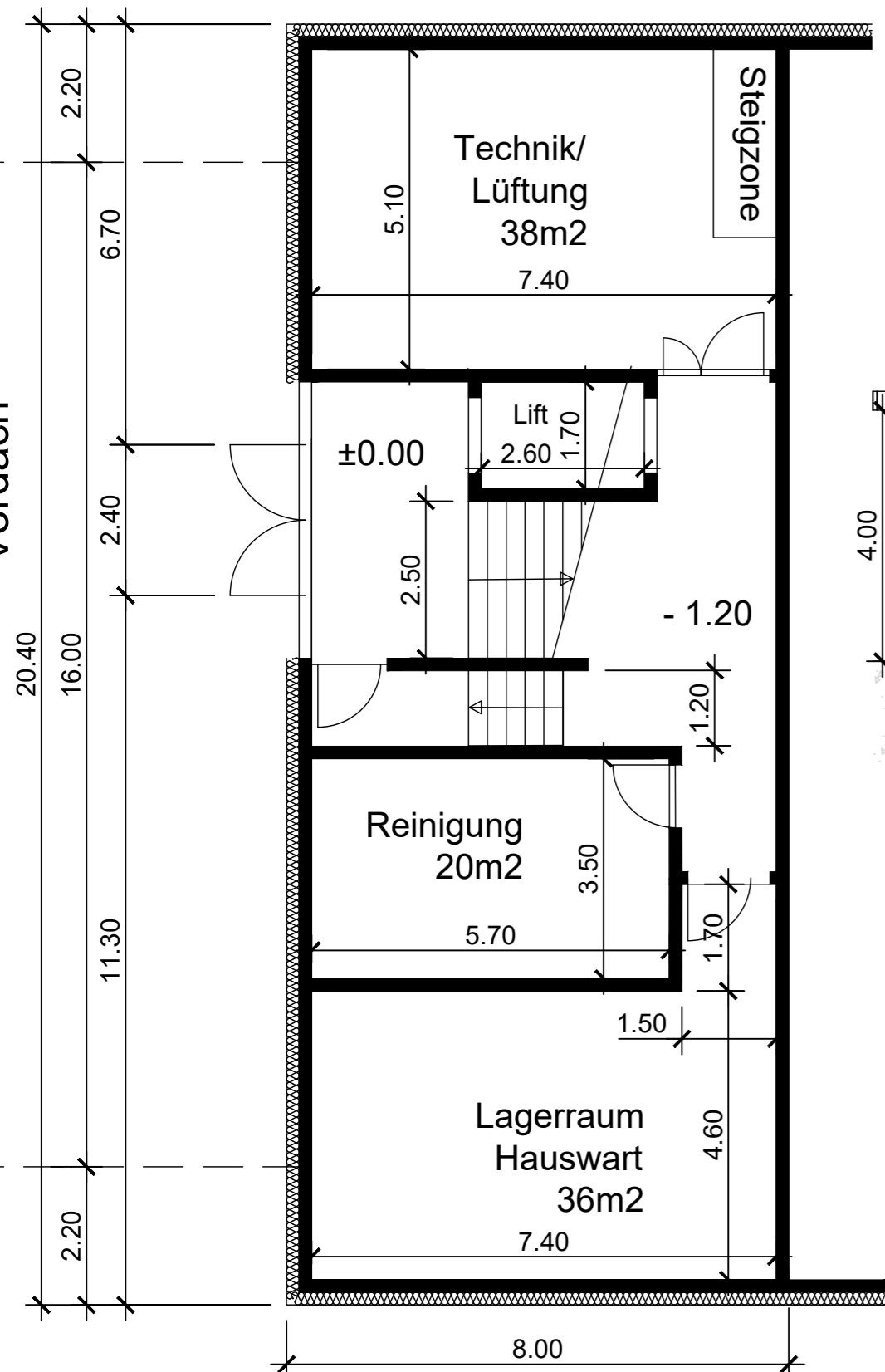


Grundriss EG +1.80 1:100

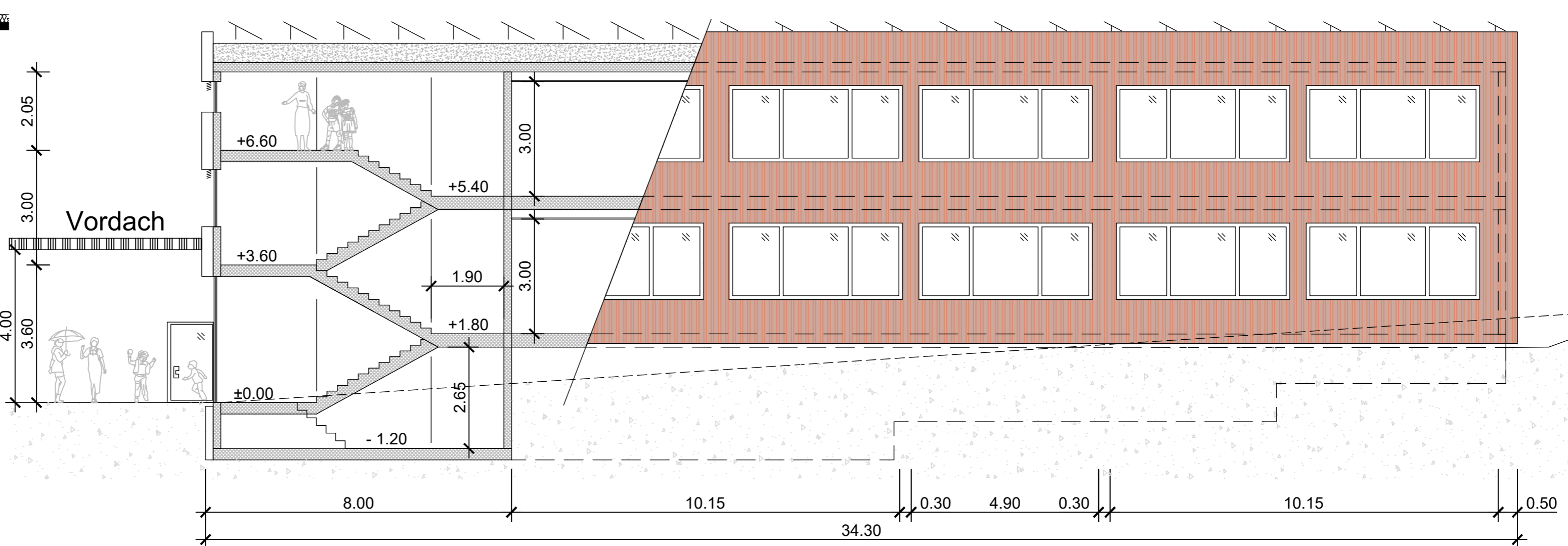


Vordach

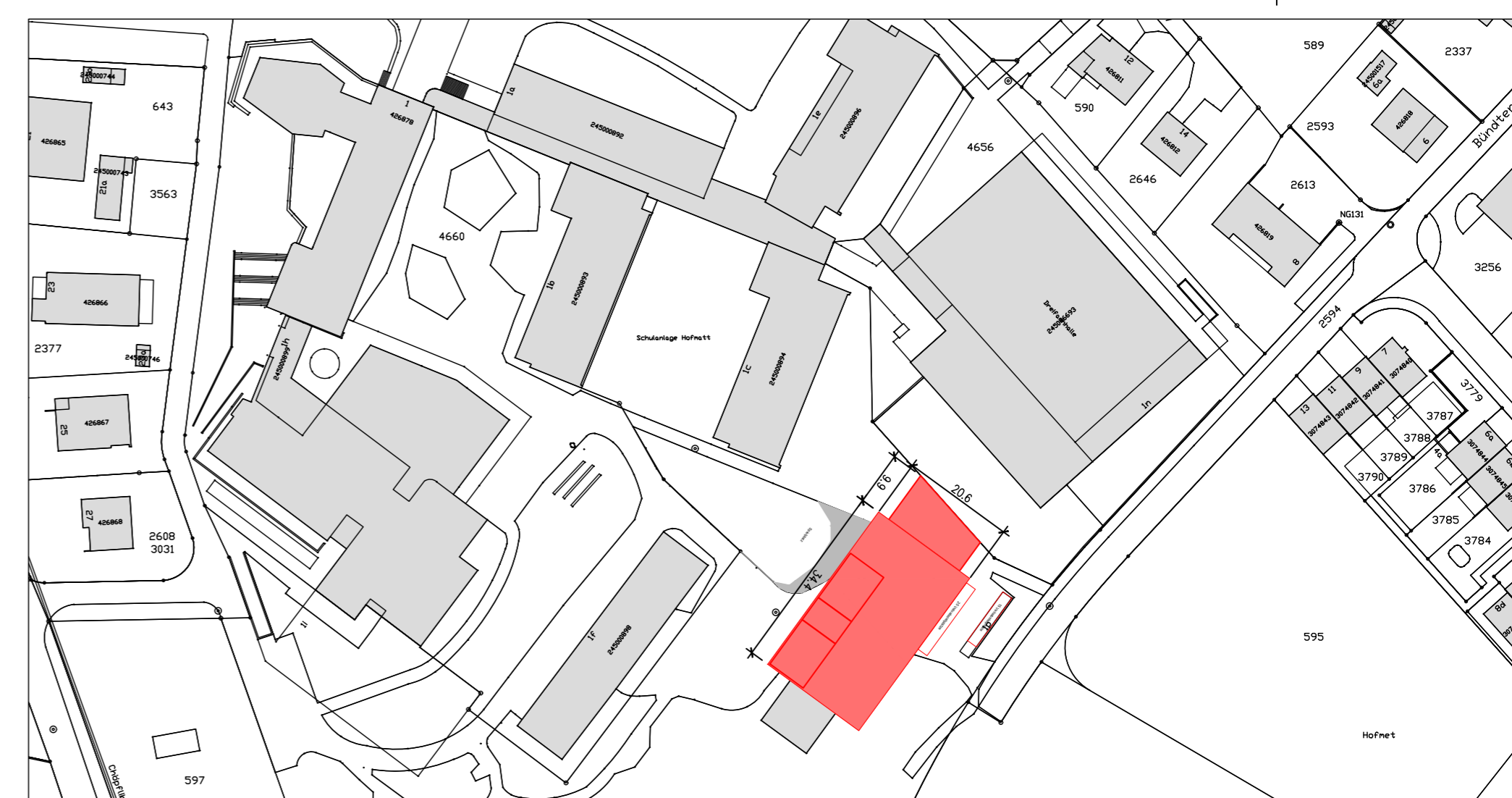
Sockelgeschoss -1.20 1:100



Ansicht Westfassade / Systemschnitt 1:100



	Fläche [m ²]	Volumen [m ³]
1. OG	709	2'657
EG	709	2'551
Sockel	163	539
Total	1'581	5'747



RATIO

Zweckmässig - Kompakt - Weitsichtig